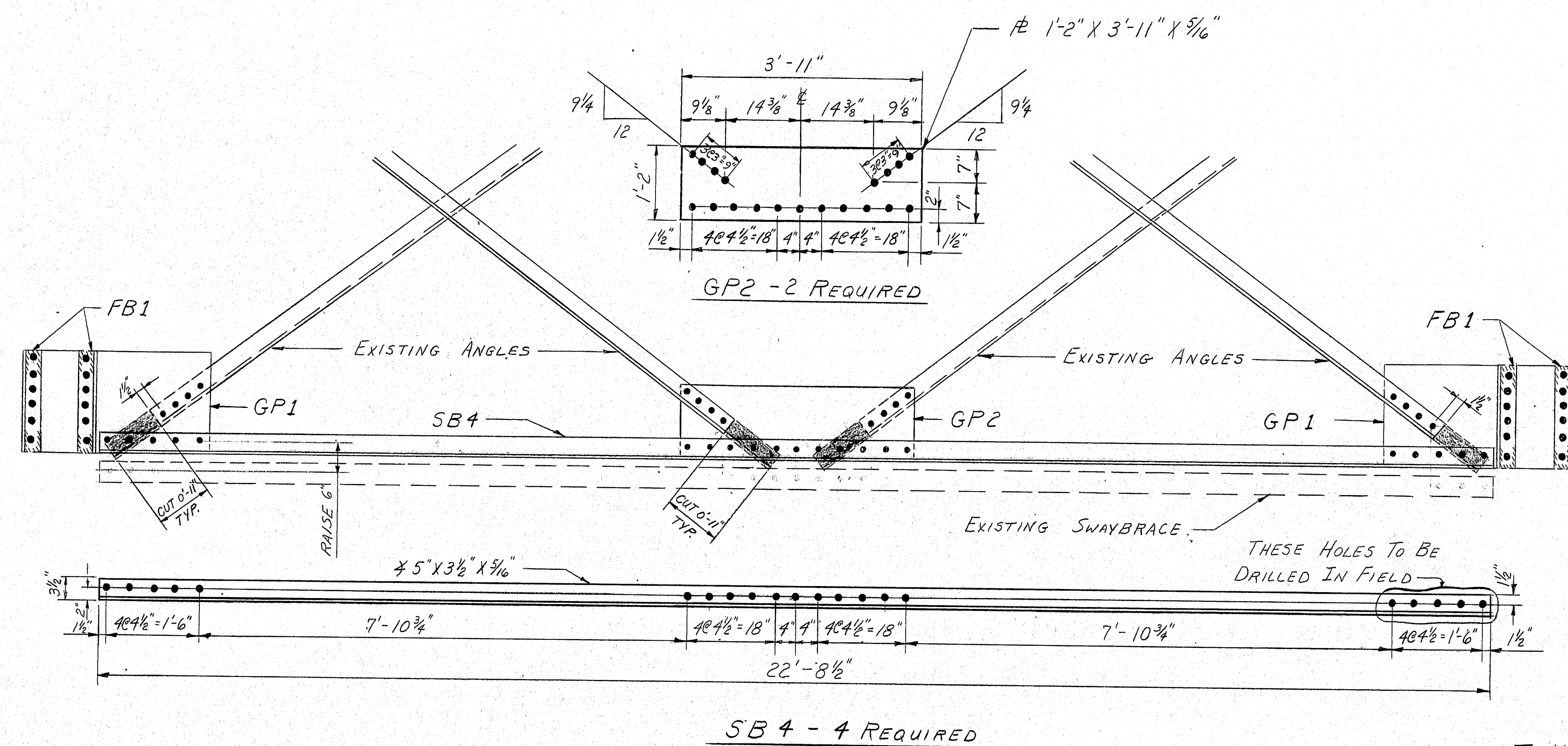
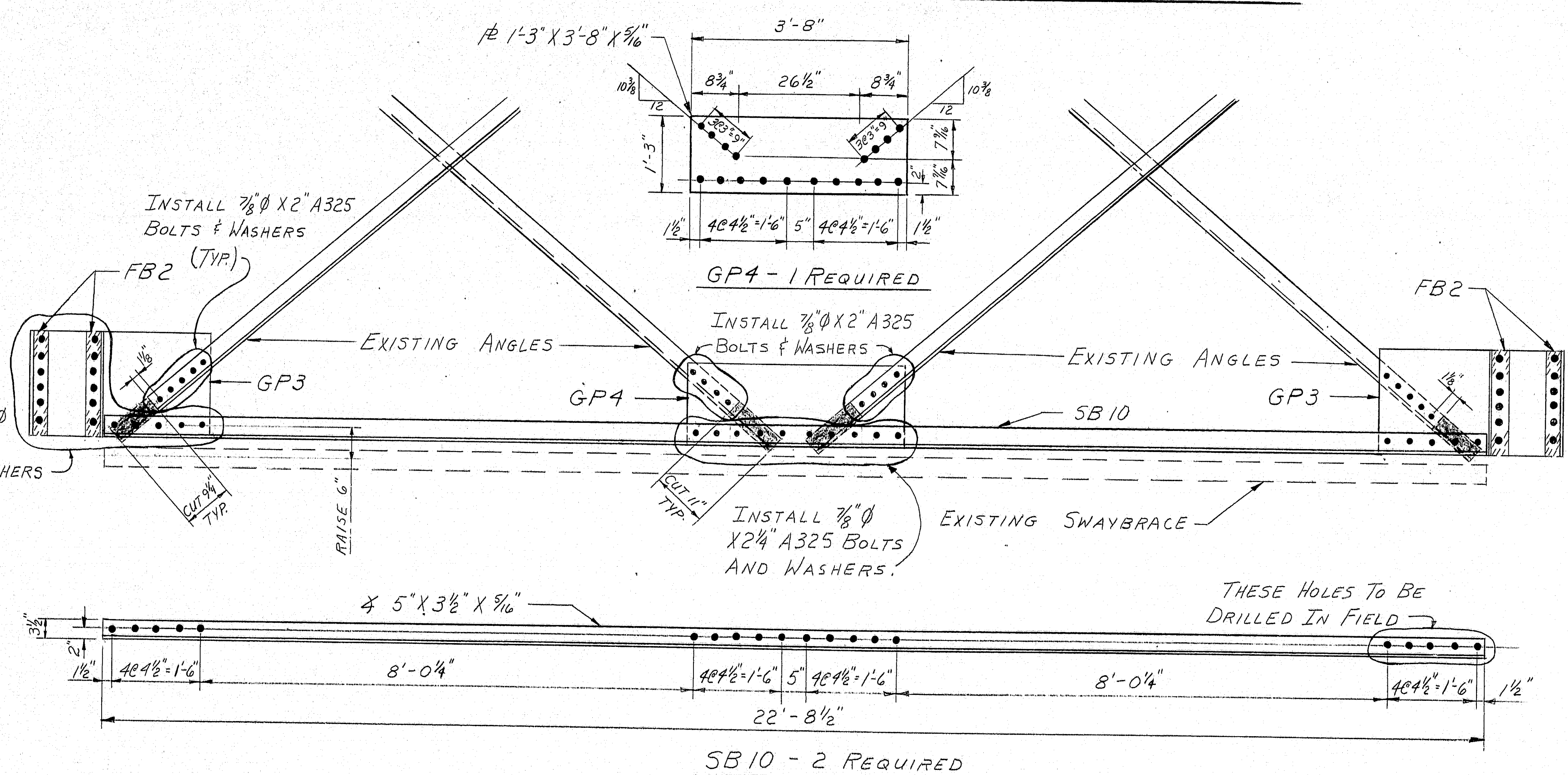


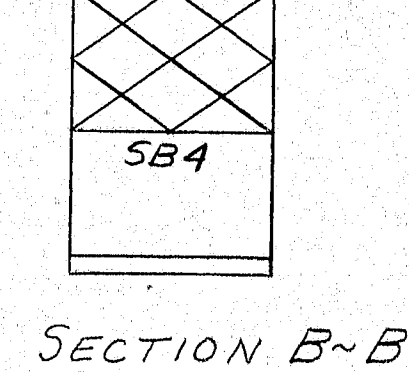
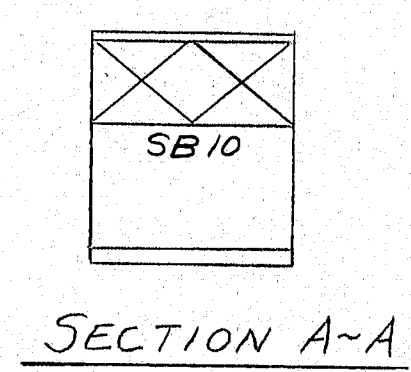
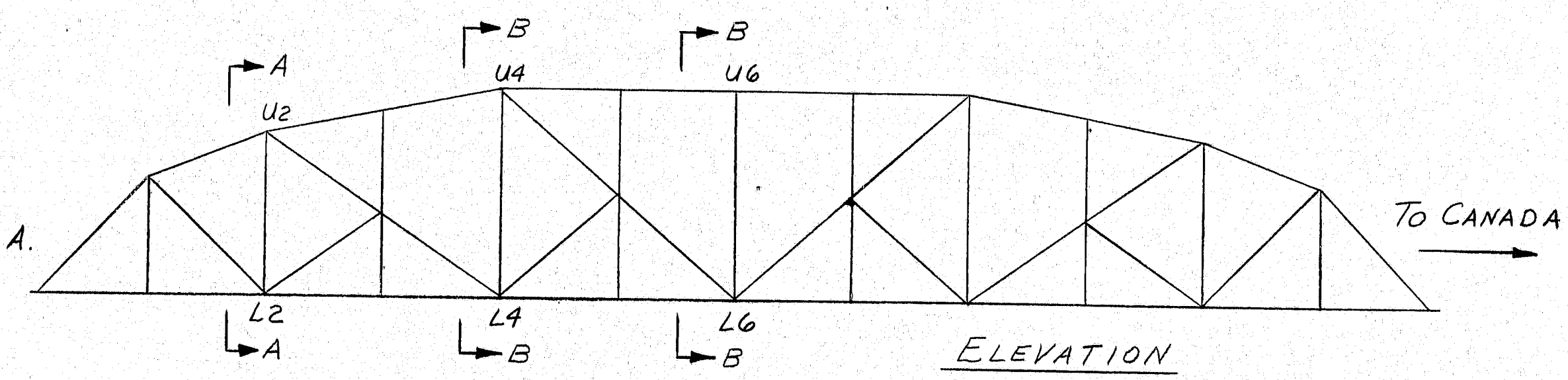
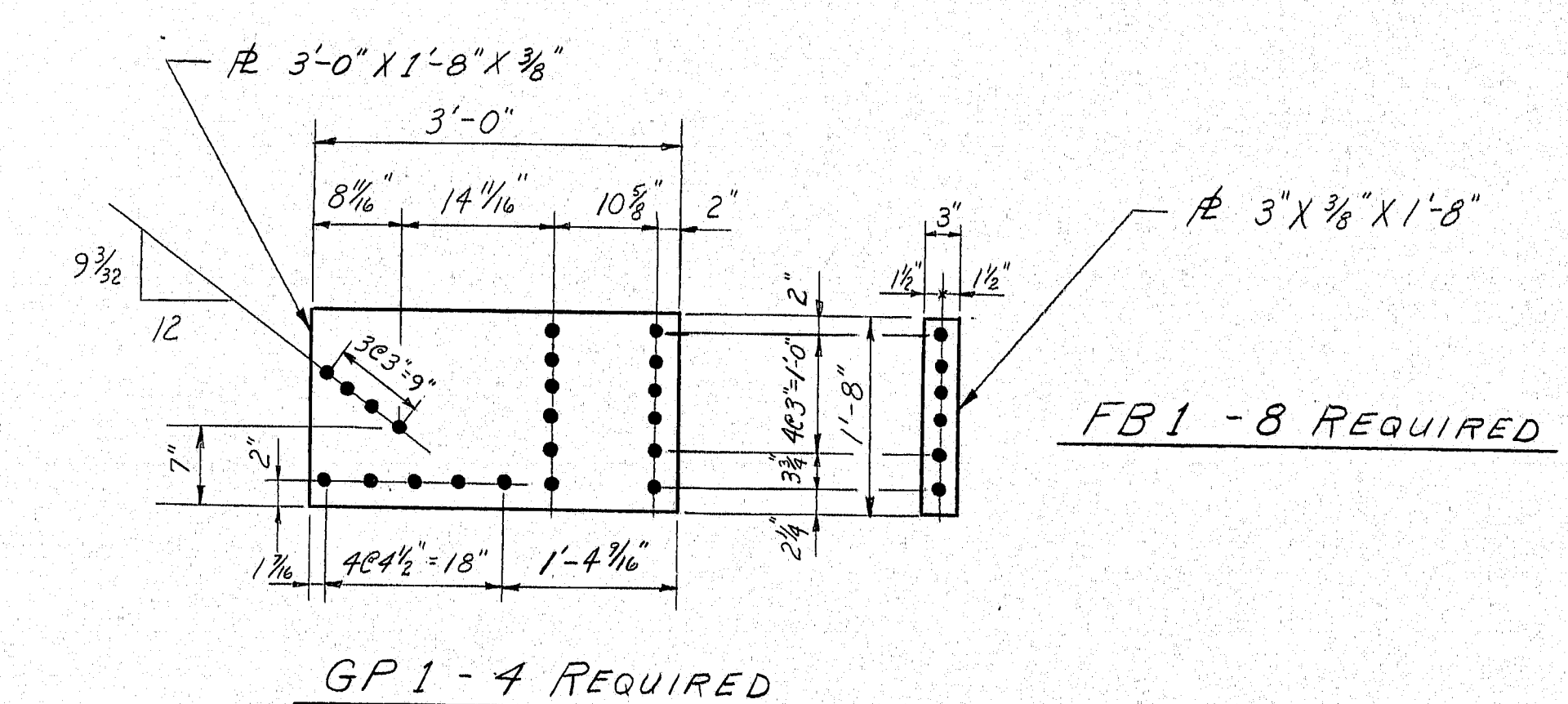
F.W.A. REQ. NO.	STATE	PROJECT NUMBER	SHEET NO.	TOTAL SHEETS
1	MAINE			



SWAY BRACING REVISION CL4-U4 & LG-U6



SWAY BRACING REVISION CL2-U2



**BOLTS & WASHERS**  
 50 EACH 7/8" Ø X 2" BOLTS  
 32 EACH 1/4" Ø X 2 1/2" " "  
 102 EACH 7/8" Ø X 2 1/2" " "  
 184 EACH 1 3/4" O.D. WASHERS

BILL OF MATERIALS				
MARK	No.	SHAPE	LENGTH	WT.
GP1	4	1/2" X 1'-8"	3'-0"	306
GP2	2	1/2" X 1'-2"	3'-11"	117
GP3	2	1/2" X 1'-9"	3'-0"	160.8
GP4	1	1/2" X 1'-3"	3'-8"	58.7
SB4	4	45 X 3 1/2 X 3/8	22'-8 1/2"	790.3
SB10	2	45 X 3 1/2 X 3/8	22'-8 1/2"	395.2
FB1	8	BAR 3" X 3/8"	1'-8"	51.2
FB2	4	BAR 3" X 3/8"	1'-9"	26.8

**NOTES:**  
 1) ESTIMATED WT. OF STEEL 1906 LBS.  
 2) ALL HOLES TO BE 1 1/8" Ø  
 3) EST. MATERIALS LIST INCLUDES  
 MAT'L TO REVISE 3 SWAY BRACES.

100-395

STATE OF MAINE  
 DEPARTMENT OF TRANSPORTATION  
 INTERNATIONAL BRIDGE  
 OVER  
 ST. JOHN RIVER  
 BETWEEN MADAWASKA, MAINE  
 AND EDMUNDSTON, N.B.  
 AROOSTOOK COUNTY  
 BRIDGE No. 2399  
 SWAY BRACING REVISIONS  
 SHEET 1 OF 1 AUGUSTA, MAINE MARCH 1987

PROJECT DESIGN ENGINEER	DATE
DESIGN - DETAILED	
CHECKED	
REVISIONS	
FIELD CHANGES	
PLANS	

BRUNING 44-132-5710-1